



Home Tips®



• CHRISTIAN BUILDING INSPECTORS, INC., 3697 HABERSHAM LANE, DULUTH, GEORGIA 30096, 770-849-0920 • JULY 2006 •

Q & A

Smoke Alarms

Few of us realize how easily -- and how quickly -- fire can destroy our homes and take the lives of those we love. Fortunately, a product is available that can help protect us against fire... the smoke alarm.



By providing an early warning in the event of fire, smoke alarms may allow you and your family sufficient time to reach safety. Many people have neglected to install smoke alarms despite their life-saving potential and low cost. Even those who do have smoke alarms often take them for granted -- forgetting that they need some attention to continue working properly. Underwriters Laboratories Inc. (UL) offers the following tips for purchasing and maintaining smoke alarms.

Cut your family's risk in half - buy smoke alarms today

Experts report that consumers may cut their risk of dying in a home fire in half simply by having a smoke alarm in their homes. Smoke alarms are available at nearly all hardware, department and discount stores, often for under \$20.

Look for the UL Mark

When you purchase a smoke alarm, look for the UL Mark on the product as well as on the packaging. The UL Mark tells you that a representative sample of the smoke alarm has been evaluated by Underwriters Laboratories Inc. (UL) to nationally recognized safety requirements. It also means that UL conducts follow-up evaluations to counter check that

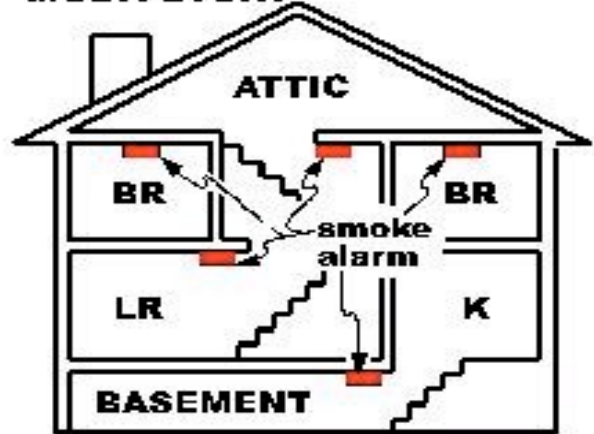
samples of the smoke alarm continue to meet these safety requirements.

Photoelectric and Ionization type alarms

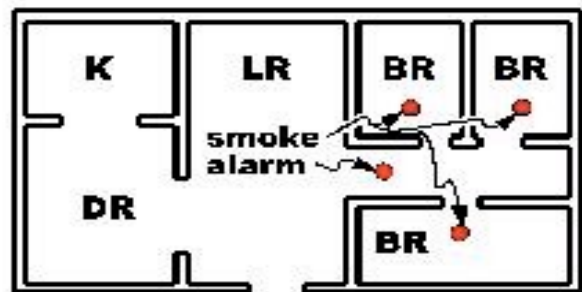
There are two types of smoke alarms available today: photoelectric and ionization. When smoke enters a photoelectric alarm, light from a pulsating light source is reflected off the smoke particles onto a light sensor, triggering the alarm. When smoke enters an ionization alarm, ionized air molecules attach to the smoke particles and reduce the ionizing current, triggering the alarm. While photoelectric smoke alarms generally respond faster to

PLACE ONE SMOKE ALARM ON EVERY FLOOR AND SLEEPING ROOM

MULTI-STORY



SINGLE LEVEL



smoldering smoke conditions and ionization smoke alarms generally respond faster to flaming fire conditions, both types provide adequate protection against fire. Combination smoke alarms featuring both photoelectric and ionization technology are also available at hardware, department and home improvement stores.

